



MONTEORO

M I N E R A L S L T D

GOLD EXPLORATION IN COLOMBIA
"el que sabe, sabe"

April 2026

Disclaimers

Important Information



MONTEORO
MINERALS LTD

This presentation is a summary description of Monteoro Minerals Ltd. ("**Monteoro**" or the "**Company**") and its business and does not purport to be complete. This document is not a solicitation for the sale of securities of Monteoro and under no circumstances is to be construed as, a prospectus, offering memorandum, or advertisement or a public offering of securities. Offers to sell, or the solicitations of offers to buy, any security can only be made through official offering documents that contain important information about risks, fees and expenses. No securities regulatory authority or similar authority has reviewed or in any way passed upon this presentation or the merits of the securities referred to herein and any representation to the contrary is an offence.

The information contained in this presentation has been prepared by Monteoro and there is no representation or warranty by Monteoro as to the accuracy or completeness of the information set forth herein. Except as otherwise stated, information included in this presentation is given as of the date hereof. Neither the delivery of this presentation nor any sale made under the terms described herein shall imply that the information herein is correct as of any date after the date hereof. The contents of this presentation are not to be construed as legal, financial or tax advice. Each prospective investor should contact his, her or its own legal adviser, independent financial adviser or tax adviser for legal, financial or tax advice. For greater certainty, none of the Company's advisors shall be responsible or liable for any of the disclosure in this presentation.

In making an investment decision, prospective investors must rely on their own examination of the Company and the terms of prospective securities, including the merits and risks involved and should not base their decision on whether to invest in the Company upon the material provided herein. Purchasing, holding or disposing of prospective securities may subject purchasers to tax consequences under the laws of Canada. These tax consequences are not disclosed in this document and prospective investors should consult with their tax advisors prior to making any future investment. Prospective investors should not construe anything in this presentation as investment, legal or tax advice. Each prospective investor should consult its own investment, legal, tax and other advisers regarding the financial, legal, tax, and other aspects of any purchase of prospective securities, including whether it is legally permitted to purchase prospective securities under applicable laws. All dollar amounts referenced herein, unless otherwise indicated, are expressed in Canadian dollars. This presentation does not constitute an offer to sell or the solicitation of an offer to buy, nor shall there be any sale of securities of the Company in any jurisdiction in which an offer, solicitation or sale would be unlawful prior to registration or qualification under the securities laws of such jurisdiction.

QUALIFIED PERSON

The technical and scientific information contained in this presentation has been reviewed and approved by Felipe Rodriguez Novoa, P.Geo, VP Exploration of Monteoro, who is a "Qualified Person" as defined in National Instrument 43-101 – Standards of Disclosure for Mineral Projects. Certain disclosure in this presentation includes historical exploration results, third-party information and references to adjacent properties, which should not be relied upon as indicative of mineralization on the Company's properties or as current mineral resources or mineral reserves.

CAUTIONARY NOTE TO UNITED STATES INVESTORS

PROSPECTIVE SECURITIES OF THE COMPANY HAVE NOT BEEN AND WILL NOT BE REGISTERED OR QUALIFIED UNDER THE SECURITIES ACT, OR ANY STATE OR FOREIGN SECURITIES LAW. THE HOLDER HEREOF, BY PURCHASING PROSPECTIVE SECURITIES, AGREES THAT PROSPECTIVE SECURITIES MAY BE REOFFERED, RESOLD, PLEDGED OR OTHERWISE TRANSFERRED ONLY (A)(1) PURSUANT TO RULE 144A UNDER THE U.S. SECURITIES ACT ("RULE 144A") TO A PERSON THAT THE HOLDER REASONABLY BELIEVES IS A "QUALIFIED INSTITUTIONAL BUYER" WITHIN THE MEANING OF RULE 144A (A "QIB"), OR IS PURCHASING FOR THE ACCOUNT OF A QIB, AND WHOM THE HOLDER HAS INFORMED THAT THE REOFFER, RESALE, PLEDGE, OR OTHER TRANSFER IS BEING MADE IN RELIANCE ON RULE 144A, AND (B) IN EACH CASE IN ACCORDANCE WITH ANY APPLICABLE SECURITIES LAWS OF ANY STATE OF THE UNITED STATES OR ANY OTHER APPLICABLE JURISDICTION.

IN MAKING ANY PROSPECTIVE INVESTMENT DECISION, INVESTORS MUST RELY ON THEIR OWN EXAMINATION OF THE COMPANY AND THE TERMS OF ANY OFFERING, INCLUDING THE MERITS AND RISKS INVOLVED. PROSPECTIVE SECURITIES HAVE NOT BEEN APPROVED OR DISAPPROVED BY THE SECURITIES AND EXCHANGE COMMISSION OR BY ANY STATE SECURITIES COMMISSION OR REGULATORY AUTHORITY, NOR HAVE ANY OF THE FOREGOING AUTHORITIES OR ANY CANADIAN PROVINCIAL SECURITIES REGULATOR PASSED ON THE ACCURACY OR ADEQUACY OF THIS PRESENTATION. ANY REPRESENTATION TO THE CONTRARY IS A CRIMINAL OFFENSE.

This presentation shall not constitute an offer to sell or a solicitation to buy any securities, nor shall there be any sale of any securities in any jurisdiction in which such an offer, solicitation or sale would be unlawful prior to registration or qualification under the securities laws of any such jurisdiction. Any distribution of securities will be made pursuant to confidential offering materials delivered in accordance with applicable securities laws.

This presentation is intended solely for the use of the person to whom it is provided and, in the United States, may only be provided to QIBs as defined in Rule 144A under the U.S. Securities Act of 1933, as amended.

THIS PRESENTATION MAY NOT BE FORWARDED OR DISTRIBUTED TO ANY OTHER PERSON AND MAY NOT BE REPRODUCED IN ANY MANNER WHATSOEVER. ANY FORWARDING, DISTRIBUTION OR REPRODUCTION OF THIS DOCUMENT IN WHOLE OR IN PART IS UNAUTHORIZED. FAILURE TO COMPLY WITH THIS DIRECTIVE MAY RESULT IN A VIOLATION OF THE SECURITIES ACT OR THE APPLICABLE LAWS OF OTHER JURISDICTIONS.

Confirmation of your Representation: In order to be eligible to view this presentation or make an investment decision with respect to prospective securities, investors must be QIBs (within the meaning of Rule 144A under the Securities Act) outside the U.S. This presentation is being sent at your request and by accepting the e-mail and accessing this presentation, you shall be deemed to have represented to us that you and any customers you represent are QIBs (within the meaning of Rule 144A under the Securities Act) and that the electronic mail address that you gave us and to which this presentation has been delivered is not located in the U.S., and (2) that you consent to delivery of such presentation by electronic transmission. You are reminded that this presentation has been delivered to you on the basis that you are a person into whose possession this presentation may be lawfully delivered in accordance with the laws of the jurisdiction in which you are located and you may not, nor are you authorized to, deliver this presentation to any other person. The materials relating to the offering do not constitute, and may not be used in connection with, an offer or solicitation in any place where offers or solicitations are not permitted by law.

Disclaimers (continued)

Important Information



CAUTIONARY NOTE REGARDING FORWARD-LOOKING INFORMATION

This presentation contains certain forward-looking information and forward-looking statements (collectively "forward-looking statements") within the meaning of applicable securities legislation. All statements, other than statements of historical fact, are forward-looking statements. Forward-looking statements in this presentation include, but are not limited to: Statements regarding the business, operations, outlook and financial performance and condition of the Company; plans and objectives of the Company; timing, type and amount of capital and operating expenditures; treatment under regulatory regimes; any other statements regarding the business plans, expectations and objectives of the Company; and any other information contained herein that is not a statement of historical fact.

Forward-looking statements are based on management's reasonable estimates, expectations, analyses and opinions at the date the information is provided, and is based on a number of assumptions and subject to a variety of risks and uncertainties and other factors that could cause actual events or results to differ materially from those projected in the forward-looking information. Assumptions upon which such forward-looking information are based include, without limitation, that no significant event will occur outside the ordinary course of business of the Company; legislative and regulatory environment; impact of increasing competition; costs of development and advancement; anticipated results of research and development activities; the ability to operate in a safe and effective manner; and the ability to obtain financing on reasonable terms.

All forward-looking statements are inherently uncertain and subject to a variety of assumptions, risks and uncertainties, including risks, uncertainties and assumptions related to: the Company's ability to achieve its stated goals, including the estimated costs associated with the advancement of business objectives; legislative changes that impact operations of the Company; the ongoing ability to work cooperatively with stakeholders; the possibility that any future research results will not be consistent with our expectations; risks that permits will not be obtained as planned; the cyclical nature of the industry in which the Company operates; risks related to failure to obtain adequate financing on a timely basis and on acceptable terms or delays in obtaining governmental approvals; political and regulatory risks associated with the industry in which the Company operates; risks related to the uncertain global economic environment which could continue to negatively affect global financial markets and could negatively affect the ability to raise capital and may also result in additional and unknown risks or liabilities to the Company. Although the Company has attempted to identify important factors that could cause actual results to differ materially from those contained in forward-looking statements, there may be other factors that cause results not to be as anticipated, estimated or intended. There can be no assurance that such statements will prove to be accurate, as actual results and future events could differ materially from those anticipated in such statements. Accordingly, readers should not place undue reliance on forward-looking statements. The Company does not undertake to update any forward-looking statements that are contained herein, except in accordance with applicable securities laws.

CONFIDENTIALITY

This presentation is strictly confidential and has been prepared by Monteoro solely for use as a summary description of the Company. This presentation is personal to each prospective investor of prospective securities offered hereby and does not constitute an offer to any other person or the public generally to subscribe for or otherwise acquire prospective securities. Distribution of this presentation to any person other than a prospective investor of prospective securities and, those persons, if any, retained to advise such prospective investor with respect to this presentation is unauthorized, and any disclosure of any of its contents without the Company's prior written consent is prohibited. Each prospective investor, by accepting delivery of this presentation, agrees to the foregoing and not to transmit or make any photocopies of, in whole or in part, this presentation or any documents delivered in connection with this presentation except to those persons, if any, retained to advise such prospective investor. Upon request, each prospective investor agrees to return all copies of this presentation and any document delivered in connection with this presentation immediately to the Company.

Monteoro Minerals Ltd.

Synopsis: Historical Success in Colombian Gold Exploration



Monteoro Minerals Ltd. embodies a combination of the historically successful private Colombian gold development consortium, **Bullet Holding Corp.** (Buritica Project, 13 Moz Au, sold to Continental Gold and presently owned by Zijin Mining), combined with Key Core Team Members of *one of the most technically successful generative exploration teams in the history of Colombian gold exploration* (Team of **AngloGold Ashanti**, assembled by Chris Lodder, 2002-2014, discovering +50 Moz AuEq⁽¹⁾ in present-day M&I Resources).

The result is a dedicated team of seasoned explorationists, holding an extensive portfolio of top-quality Colombian exploration properties.

(1) Monteoro does not own these properties nor is the adjacent mineralization indicative of Monteoro's properties

Investment Highlights

A Leader in Colombian Gold Exploration



Large Land Position: +1.2 million hectares in Colombia

Significant Historical Expenditures: +US\$40M

Diversified Target Portfolio: Au-Cu Porphyry, Pluton-Related Au-Ag, High-Grade Au-Ag Veins, Intermediate-Sulphidation Au-Ag, Au-Ag-Cu Skarn

Experienced Exploration Team: +50 Moz⁽¹⁾ Colombian Gold Discoveries

Unlocking Potential: Targeting Multi-Million Ounce Discoveries

Operational Excellence: >100 Years of Combined In-Country Experience

Colombian Track Record: In-Country Expertise in ESG Responsibilities

Pureplay Exposure to Prolific, Growing Gold Producing Region

(1) Monteoro does not own these properties nor is the adjacent mineralization indicative of Monteoro's properties

Monteoro: Management Team

Board of Directors & Management



Board of Directors



Gustavo Koch
Chairman



Bob Neill
Director



Robert Shaw
Director



Marc Prefontaine
Director

Management



Bob Neill
CEO



Felipe Rodriguez Novoa
VP Exploration



Oscar Ivan Sepulveda
Chief Geologist

Special Advisor



Chris Lodder
Advisor

Monteoro: Who We Are

Track Record of Big Discoveries in Colombia



Colombian Management and Directors

Bob Neill, Director, CEO, Colombia

- Operational Manager of Bullet Holding Corp. (since 2011), based in Medellin
- International business executive with successful track record operating private and publicly-held companies in challenging jurisdictions
- Has served as director and officer for several publicly traded companies.
- Experience in Canada, Mexico, Panama, Cambodia, and Colombia
- Strong Operational experience in Colombia: ESG, Community Relations, Colombian Mineral Titles and Mining Code

Felipe Rodriguez Novoa, V.P. Exploration (P.Geo)

- 20 years experience in mineral exploration and geology
- Senior Geologist, Colombia: AngloGold Ashanti, B2Gold, Cordoba Minerals, Agnico Eagle
- M.Sc. MINEX Program, Queens University, Canada
- Ph.D. Geology (2023), Colorado School of Mines, U.S.A.

Oscar Ivan Sepulveda Gomez, Chief Geologist, Colombia

- Senior geologist with +25 years experience in Colombia, participating in several world-class discoveries
- Geologist, Colombia for AngloGold Ashanti from 2010-2014, including 4 years as Chief Geologist
- Managed many of AngloGold Ashanti's generative/greenfields exploration programs

+50 Moz⁽¹⁾
Gold Discoveries in Colombia



Special Advisor

Chris Lodder, Special Advisor

- Current President of Osisko Development. Former President, CEO and Director of Barkerville Gold Mines
- President of Talisker Exploration Services Inc.
- +30 years experience dedicated to greenfields and brownfields exploration, and mine development with major and junior mining companies
- AngloGold Ashanti Team Leader for +34 Moz in greenfields discoveries

(1) Monteoro does not own these properties nor is the adjacent mineralization indicative of Monteoro's properties

Monteoro: Who We Are

Outstanding Directorship with Proven Discovery and Development Successes



Marc Prefontaine, Independent Director

- Former President and CEO of Grayd Resource Corp., responsible for exploration, development and sale of the La India Au-Ag deposit, Mexico
- Co-founder and former President and CEO of Orla Mining Ltd., responsible for acquisition and advancement of the Camino Rojo (Mexico) and Cerro Quema (Panama) Projects
- Senior geologist with +30 years of experience in all aspects of mineral exploration and development

Gustavo Koch, Chairman and Independent Director

- Responsible for the early development of the Buriticá Au-Ag deposit located in Colombia. Managed exploration properties at La Colosa (sold to Anglo Gold Ashanti) and Gramalote (sold to Anglo Gold Ashanti and B2 Gold)
- Co-founder and Executive Vice President and Director of Continental Gold, bringing Buriticá to construction with >6 M&I Moz AuEq
- Former Executive Director of the Mining Association of Argentina (CAEM), and Professional Lawyer (LLM, The American University, Washington D.C., J.D. Universidad Nacional, Santa Fe, Argentina)

Robert Shaw, Independent Director, Strategic Advisor, Geologist

- Project Manager, 1986-1993, Golden Star Resources, Omai, Guyana, Gros Rosebel, Suriname
- Founding member and Exploration Manager of Metallica Resources (Cerro San Pedro, Mexico, El Morro, Chile, Gramalote, Colombia)
- Chief Geologist, Colombia for AngloGold Ashanti from 2002-2010. Worked with teams that made key discoveries including Gramalote, La Colosa, and La Quebradona (Chaquiro)
- International Consultant with +30 years experience throughout South/Latin America

Monteoro: Who We Are

Responsible for Several Major Modern Discoveries in Colombia



- ✓ Active as a mine operator and project developer in Colombia since 1984
- ✓ Founding members of AngloGold Ashanti's core Colombia Greenfields team, 2002-2014
- ✓ The Monteoro team has contributed to many of Colombia's major modern discoveries including:
 - Buriticá (Continental Gold)
 - 13 Moz Au – 100% Bullet project – Sold to Zijin Mining in 2020 for US\$1 billion
 - Gramalote (AngloGold Ashanti - B2Gold)
 - 4 Moz Au – Bullet contributed to property package
 - La Ruana (formerly IAMGOLD-Solvista / now BHC)
 - Major gold/copper porphyry district – 100% Bullet project
 - La Colosa (AngloGold Ashanti)
 - +30 Moz Au – Bullet contributed to property package
 - Quebradona (AngloGold Ashanti)
 - +20 Moz AuEq (incl. Cu)
 - Niverengo-La Pastorera (Waymar Resources presently Orosur properties)
 - Bullet contributed to property package
 - San Matias (Cordoba Minerals)
 - Important copper-gold district – Bullet contributed to property package

Grupo De Bullet in Colombia

Key Successes for Grupo De Bullet:

- +30 years of operations in Colombia having assembled a highly experienced and knowledgeable in-country team
- Previous partnerships include Continental Gold, Solvista Gold, Cordoba Minerals, and many others
- BHC staff includes geologists, lawyers, permitting specialists, and other mining professionals
- BHC has a wide network of contacts in Colombia including government authorities, lawyers, and geologists
- Gustavo Koch held several positions at Continental Gold from 2007-2016 advancing Buriticá to a maiden resource estimate of +9 Moz
- Gustavo Koch and Robert Shaw are members of the "Grupo Nus" which sold 100% of the Gramalote Property to AGA and B2Gold in 2007-2008

Bullet Partner Projects



Comparable Explorers: Deep Value Potential



✓ Massive Land Package |
 ✓ Proven Drill Results |
 ✓ Leading Exploration Team

Market Capitalization	-	C\$2,512M	C\$841M ⁽²⁾	C\$185M	C\$163M	C\$161M	C\$139M	C\$84M
Focus Jurisdiction	Colombia	Colombia	Suriname	Suriname / Guyana	Colombia	Colombia	Colombia	Colombia
Flagship Project(s)	La Ruana / Nudillales / La Marquesa	Guayabales / San Antonio	Antino	Majorodam, Igab, Tosso Creek	Santa Ana	El Bagre Complex	Anza	Quinchia
Flagship Project Ownership	100%	Option to earn 100%	Option to earn 75%	Option to earn 100%	100%	100%	100%	Option to earn 100%
Project Stage	Pre-Resource	Pre-Resource	Pre-Resource	Pre-Resource	Resource	Production	Resource	PEA
Land Package	>1,200,000 ha	6,445 ha	56,000 ha	44,200 ha	61,088 ha	41,000 ha	39,940 ha	10,500 ha
Top Drillhole	457 m @ 1.2 g/t = 568 g/t*m	497 m @ 3.0 g/t = 1,500 g/t*m	6 m @ 95 g/t = 568 g/t*m	30 m @ 2 g/t = 62 g/t*m	7 m @ 25 g/t = 170 g/t*m	6 m @ 34 g/t = 219 g/t*m	62 m @ 13 g/t = 795 g/t*m	629 m @ 1 g/t = 554 g/t*m
Attributable MI&I Resources ⁽¹⁾	n/a	n/a	n/a	n/a	427 koz AuEq	526 koz Au	219 koz Au	2.6 Moz AuEq

Note: The data is for illustrative purposes only | Source: Capital IQ and public SEDAR+ filings | Market data shown as of April 28th, 2026 (1) Equivalent figures calculated based on long-term consensus metal prices: US\$4,044/oz Au, US\$52.13/oz Ag, US\$5.32/lb Cu, US\$0.96/lb Pb, US\$1.32/lb Zn, and US\$21.13/lb Mo (2) Shown on a 100% basis

Unlocking Colombia's Exploration Potential

Our Keys to Success In Country



- ✓ **Historic Knowledge Base & Depth of Geological Understanding**
- ✓ **Highly Proficient Project Generative & Operational Capacities**
- ✓ **On-the-Ground In-Field Expertise in Colombia**
- ✓ **Access to Human Resources (Technical, Social, Security, Legal)**
- ✓ **Knowledge of Security, Social, & Environmental Risks**
- ✓ **Large Technical Database & Expert Land Tenure Management**
- ✓ **Connections in Artisanal Mining Community, Third-Party Tenure**
- ✓ **Targeting Multi-Million Ounce Discoveries**



MONTEORO
MINERALS LTD

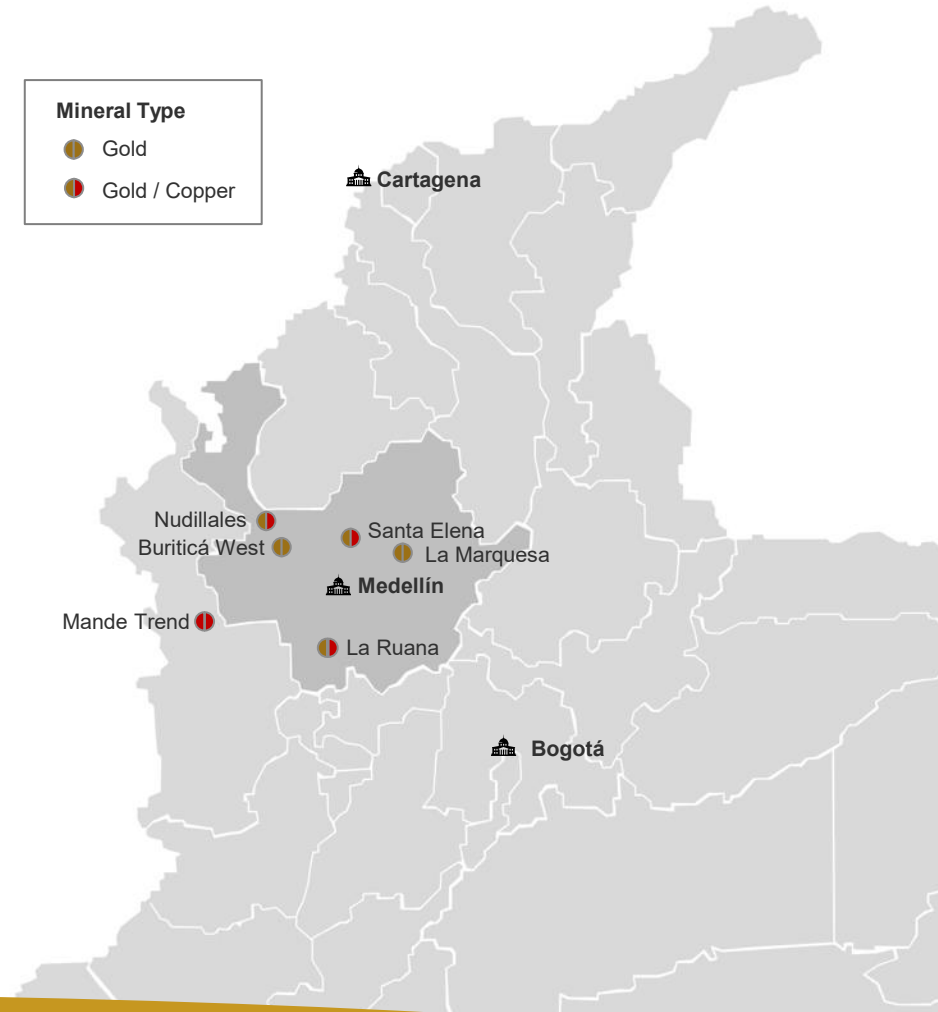
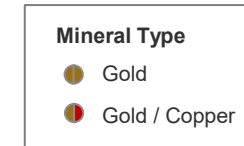
Property Portfolio

Property Portfolio

Six Major Projects plus >1.2 Million Hectares in Additional Claims



- **Six major project areas plus over 1.2 million hectares in additional claims throughout the productive metallogenetic regions of Colombia**
 - **+US\$40M in historical expenditures (US\$20M spent across the six highlighted projects alone)**
- **Project focus in/around Antioquia, Caldas, Risaralda and Choco Departments**



Core Projects

- **La Ruana (Titled)**
- **Nudillales (Titled)**
- **La Marquesa (Titled)**

Additional Projects

- **Buriticá West (Titles and Applications)**
- **Mande Batholith Trend (Titles and Applications)**
- **Santa Elena (Titles and Applications)**

Historic Expenditures in Colombia

Summary: Historic Spending by Monteoro (including Bullet Holding + Monteoro)



BULLET HOLDING CORP.

Estimated past spend (over last 15 yrs)

(All values in USD)

Estimated Drilling Cost: ~US\$500/m

Includes primarily in-the-ground expenditures from various larger JV's – not smaller scale prospecting nor mineral title and application holding costs accumulated over the years, which are not estimated here

	<u>Meters</u>	<u>Drilling cost</u>	<u>Canons</u>	<u>Other Spend</u>	<u>Total</u>	<u>Notes</u>
La Ruana	12,000	\$6.0M	\$0.8M	\$2.0M	\$8.8M	8,000m SVV and 4,000m IMG, geophysics, regional geochem
Santa Elena	16,000	\$8.0M	-	-	\$8.0M	CuOro - HudBay JV
Nudillales	-	-	\$0.1M	\$0.5M	\$0.6M	regional geochem, soil geochem, rock sampling
Marquesa	1,475	\$0.7M	\$1.5M	\$1.0M	\$3.2M	drilling, geophysics, regional geochem
Total		\$14.7M			\$20.6M	+\$40M in historical expenditures across +1.2 million hectares

MONTEORO MINERALS LTD.

Estimated past spend (over last 3 yrs)

(All values in USD)

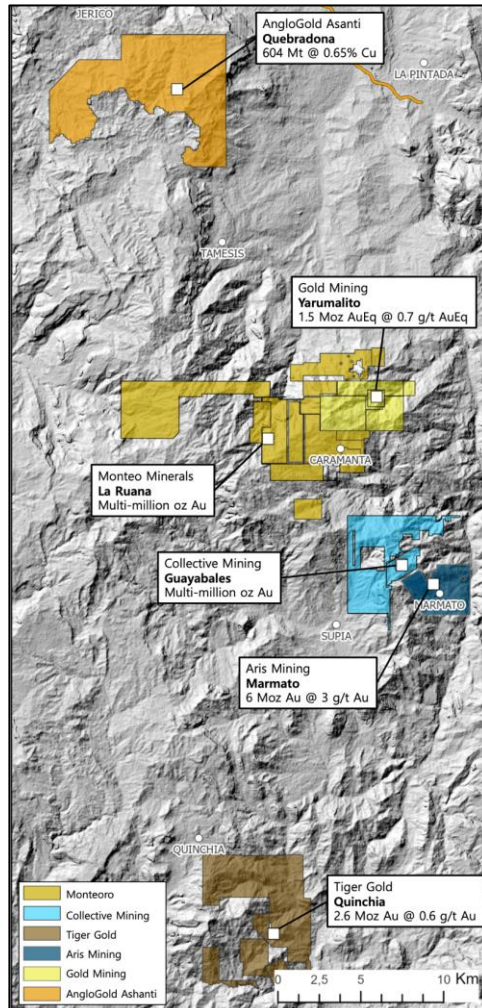
	<u>Meters</u>	<u>Drilling cost</u>	<u>Canons</u>	<u>Other Spend</u>	<u>Total</u>	<u>Notes</u>
San Pedro	-	-	-	\$350k	\$350k	Mapping, rock chip and channel sampling, geology, Geochem, legal, title
Other Projects	-	-	-	\$100k	\$100k	Project Evaluations, legal, title reviews
Total					\$450k	

La Ruana Project

Porphyry Au-Cu + Epithermal Au-Ag Trend in the Middle Cauca Belt



MONTEORO
MINERALS LTD



Five Au-Cu porphyry centers identified over a +3 km N-S trend

- “Core” land tenure in the heart of *Colombia’s Middle Cauca Porphyry Belt*

- Multi-Phase Late Miocene Porphyries intrude the mid-late Miocene Combia Fm

• Multi-Million Oz Au (Ag, Cu, Pb, Zn) discoveries at:

- El Poma (Barrick)
- Quinchia (Batero, AGA, B2GOLD)
- Marmato (Gran Colombia – Aris Mining)
- Guayabales (Collective Mining)
- Quebradona (Anglogold Ashanti)
- La Aurora (B2Gold)
- La Mina (B2Gold – AGA, Gold Mining)
- Titiribi (Sunward, GoldMining)

- Located between Guayabales (Collective Mining) and La Quebradona (AGA)

- Excellent Access and Infrastructure

La Ruana: Strong drill results to date, (2012-2014, Solvista Gold-lamgold)⁽¹⁾

- 457 m at 1.24 g/t AuEq (4m from surface)
- 323 m at 1.58 g/t AuEq (3m from surface)
- 358 m at 0.82 g/t AuEq (5m from surface)
- 150 m at 1.92 g/t AuEq (5m downhole)
- 292 m at 0.83 g/t AuEq (5m from surface)

(1) Gold equivalent figures calculated based on consensus metal prices: US\$3,378/oz Au, US\$38.23/oz Ag, US\$4.79/lb Cu, and US\$18.38/lb Mo

La Ruana Project

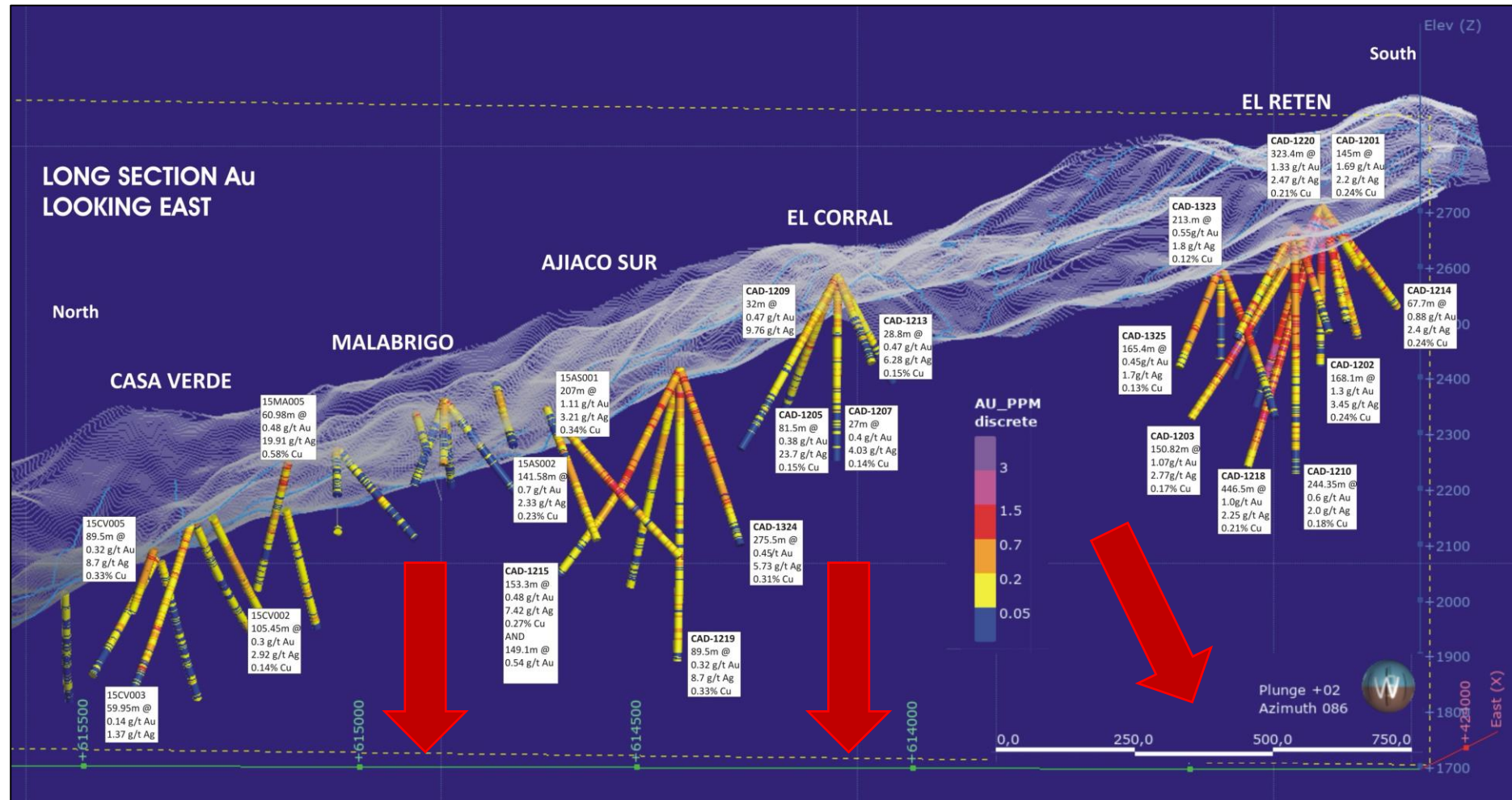
Porphyry Au-Cu + Epithermal Au-Ag Trend in the Middle Cauca Belt



MONTEORO
MINERALS LTD

Five Au-Cu (Ag) porphyry centers identified over a +3 km N-S trend

- ~12,000 m drilled at La Ruana to date by Solvista Gold and lamgold
 - Peak Solvista Gold market capitalization in 2012 of ~C\$70M (US\$1,800/oz Au)
- Combined historic expenditures ~US\$8.75M
- Additional undrilled porphyry exploration targets and epithermal potential



La Ruana Project

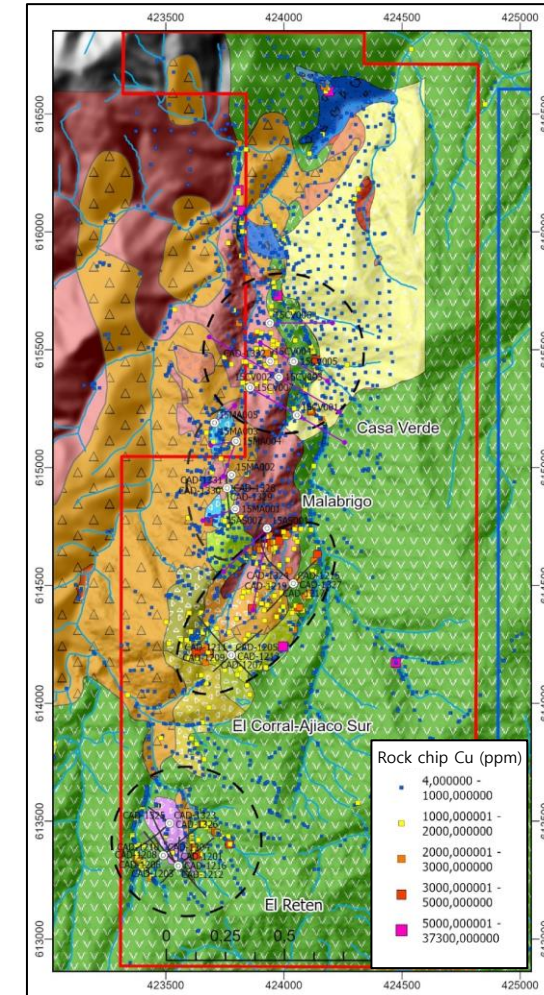
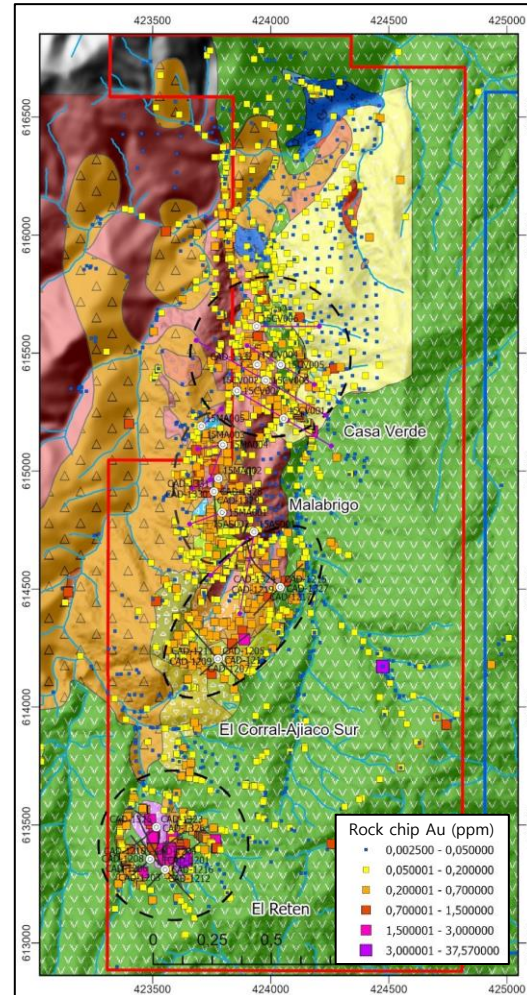
Porphyry Au-Cu + Epithermal Au-Ag Trend in the Middle Cauca Belt



MONTEORO
MINERALS LTD

Five Au-Cu porphyry centers identified over a +3 km N-S trend

- Strong Au and Cu mineralization from soils and rock samples from outcropping potassic core zones of polyphase porphyry centres
- Strong drill results to date
- Numerous additional anomalies for future follow-up
- Potential for additional buried porphyries below Combia Fm. cover as seen at AGA's Quebradona to the north
- Regional-scale mineral system, incompletely explored



La Ruana Project

Porphyry Au-Cu + Epithermal Au-Ag Trend in the Middle Cauca Belt



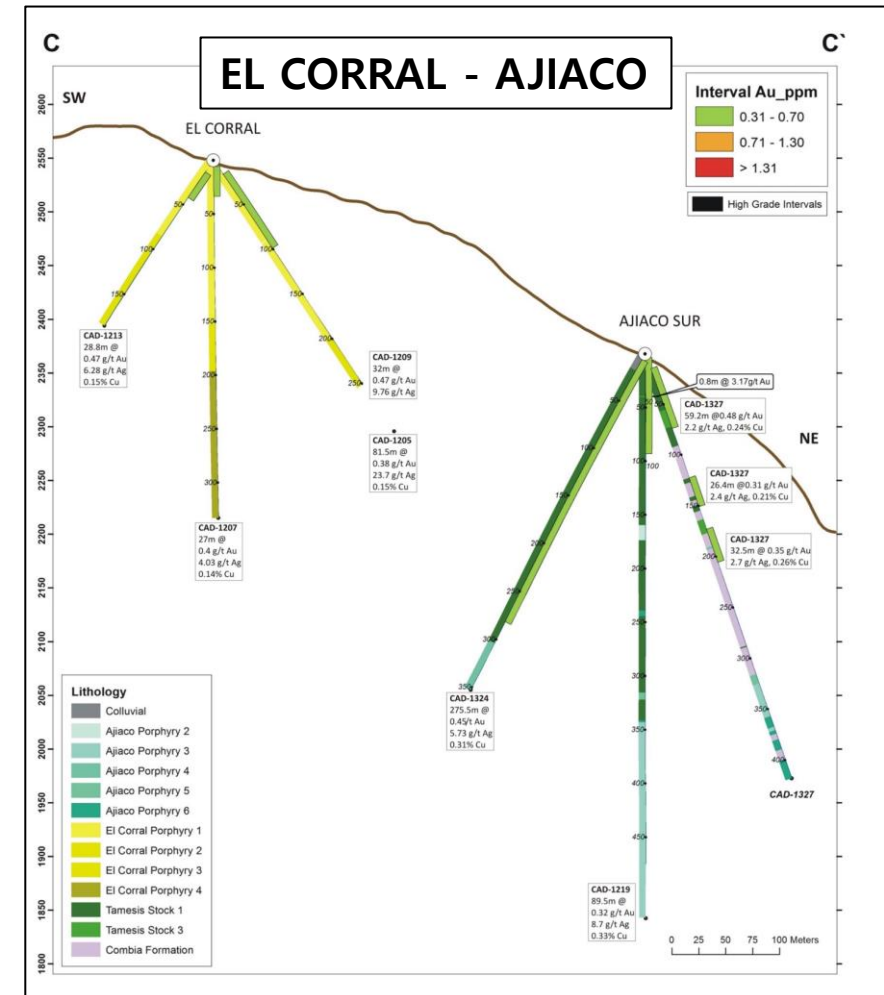
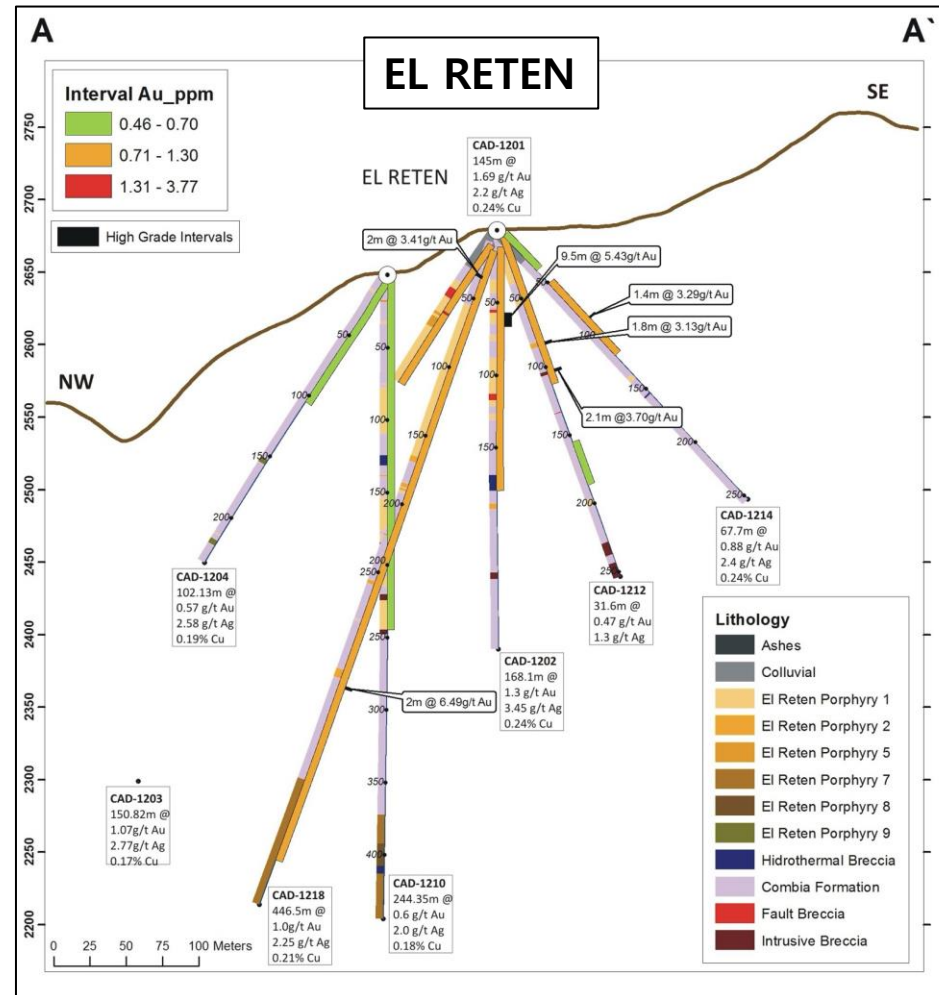
MONTEORO
MINERALS LTD

El Reten

- Discovery hole: CAD1201: 145m @ 1.69 g Au/t
- Very high grade hypogene Au in strong potassic alteration with localized high-grade zones (e.g. 9.5m @ 5.4 g Au/t)
- Consistent variography in both Au and Cu grade to depth

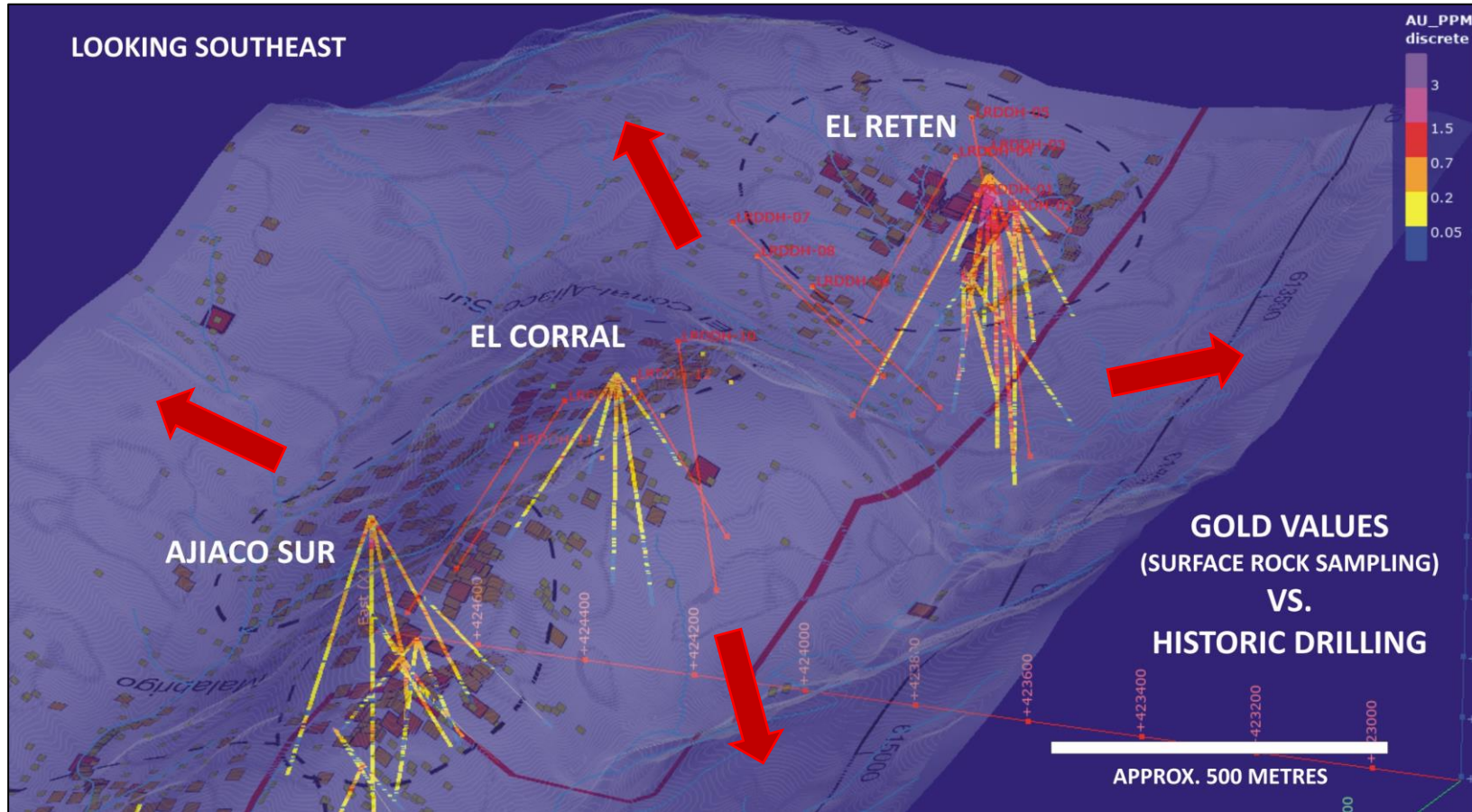
Corral-Ajiaco

- Consistently higher-grade Cu with 0.4-0.7 g/t Au
- El Corral is very enriched in Ag (CAD1205: 81m @ 23.7 g Ag/t): Suggests epithermal overprint as at Guayabales to south



La Ruana Project

2026 Preliminary Drill Program



La Ruana 2026 Drill Program

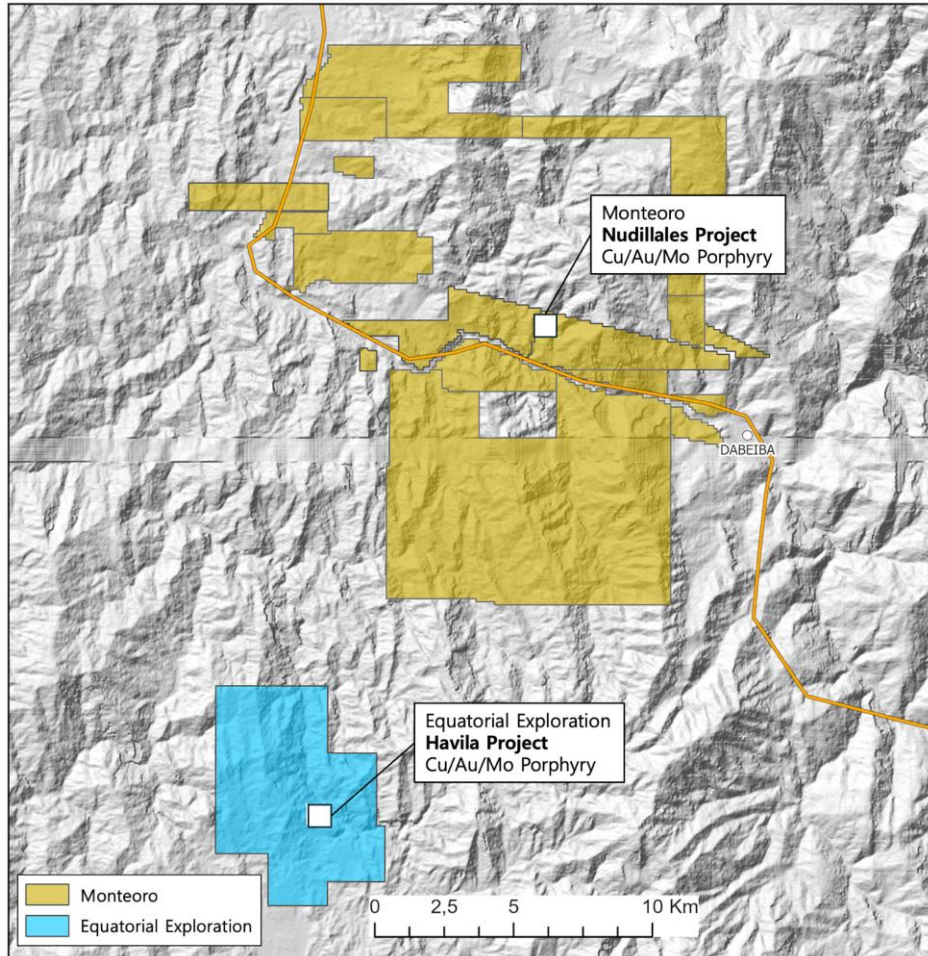
- Initial drill program targeting ~5,000 m
- Designed to explore the extent of known mineralization, confirmatory drilling for prior drillholes, define continuity between previously drilled holes, and step-out / scout drilling on new targets
- Average drillhole depth targeting ~300-400 m, with additional deeper drillholes planned
- Drill permits in place

Nudillales Project

Porphyry Cu-Au-Mo Project – High-Grade Surface Sampling

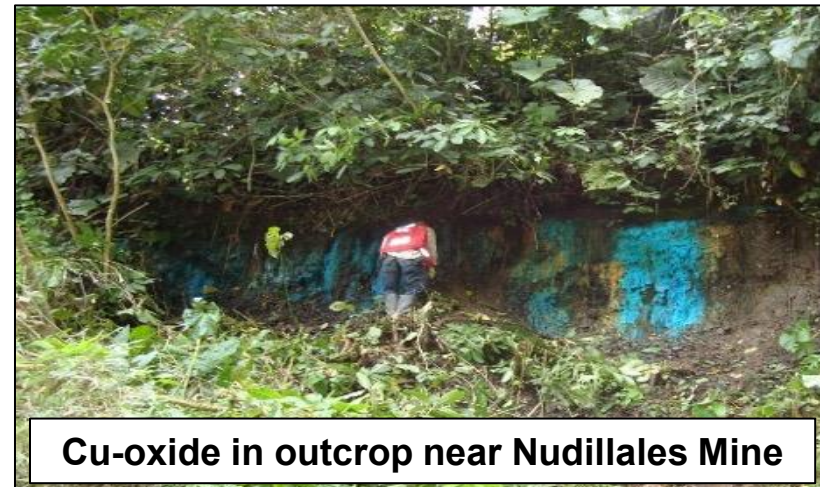


MONTEORO
MINERALS LTD



- Large multiphase Cu-Au-Mo porphyry center
- +1.5 km N-S trend
- +12,000 ha of Mineral Exploration Titles and Apps
- Past expenditures to date: US\$500K
- ~1,200 m x 400 m Cu surface soil anomaly with local values exceeding 1% Cu and strong Cu-Au-Mo rock-chip geochemistry
- Drill (water) permitting is in process

**UNDRILLED
Porphyry
Cu-Au-Mo
Rock-chips up to:
4% Cu
4.3 g/t Au
0.6% Mo**

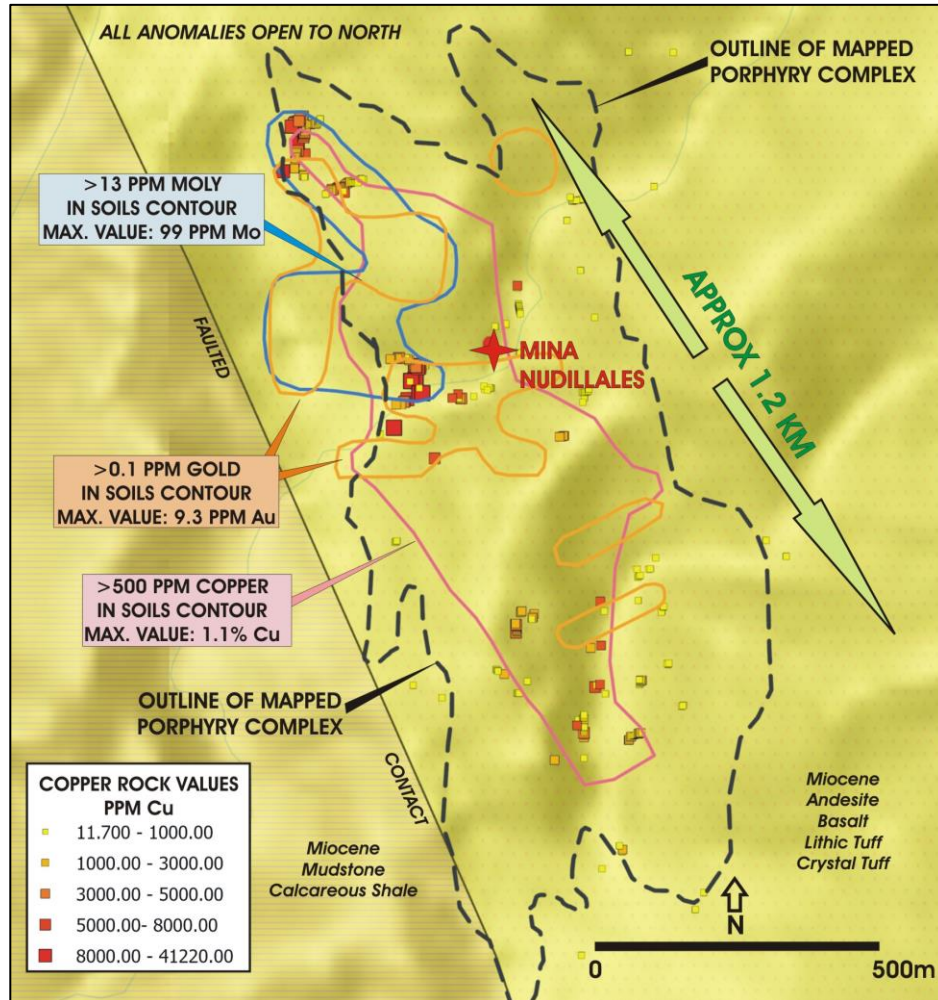


Nudillales Project

Porphyry Cu-Au-Mo Project – Strong Soil and Rock Results for Copper and Moly



MONTEORO
MINERALS LTD



Copper Results:

- Large >1 km trend consistently above 0.05% Cu in Soils
- Cu Soil Samples up to 1.1% Cu
- Cu Rock Samples up to 4% Cu
- Cu Values strongest in South
- System open to the North

Moly Results:

- Mo Soil Samples up to 99 ppm Mo
- Mo Rock Samples up to 0.6% Mo
- Mo (Au) are strongest to north suggests Mo may be part of a separate porphyry/mineral pulse

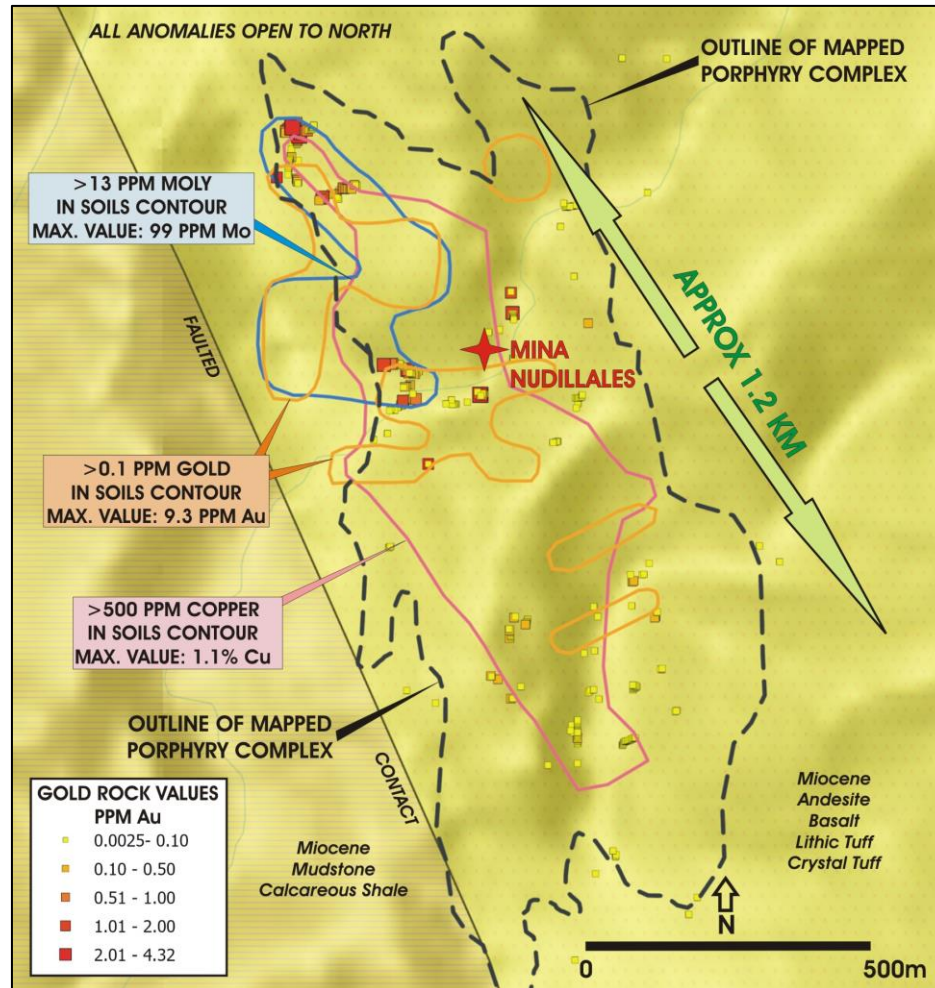
Initial high-grade results from soil and chip sampling suggest the potential for a larger system

Geologically similar to the globally significant Warintza Project (Solaris Resources) in Ecuador:

- Copper-gold porphyry deposit
- +3.7 billion tonnes of M&I resources with 2.1 billion tonnes of inferred resources
- Low strip-ratio and early access to high-grade material
- One of the most compelling copper development assets globally

Nudillales Project

Porphyry Cu-Au-Mo Project – Strong Soil and Rock Chip Results for Gold



Gold Results:

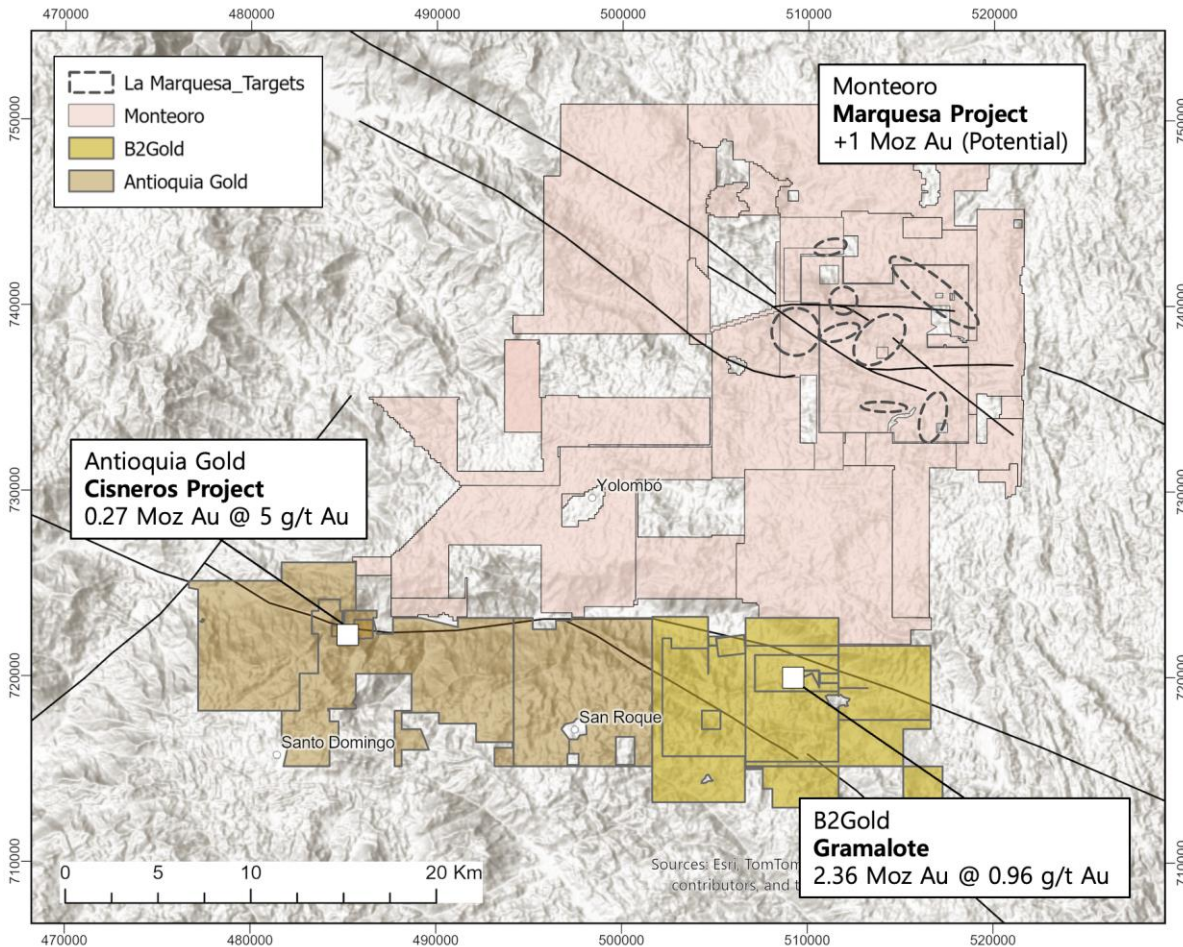
- Large 600 m trend above 100 ppb Au
- Various additional patchy Au in Soil Anomalies
- Au Soil Samples up to 9.3 g/t Au
- Au Rock Samples up to 4.3 g/t Au
- Au (Mo) Values strongest in North
- Strongest Au in Rock Values are off (N) of Soil Grid
- System open to the North

La Marquesa District

Km-Scale Pluton-Related Bulk-Tonnage and High-Grade Au-Ag Targets



MONTEORO
MINERALS LTD



Antioquia Batholith-Hosted - Gramalote-Style Targets

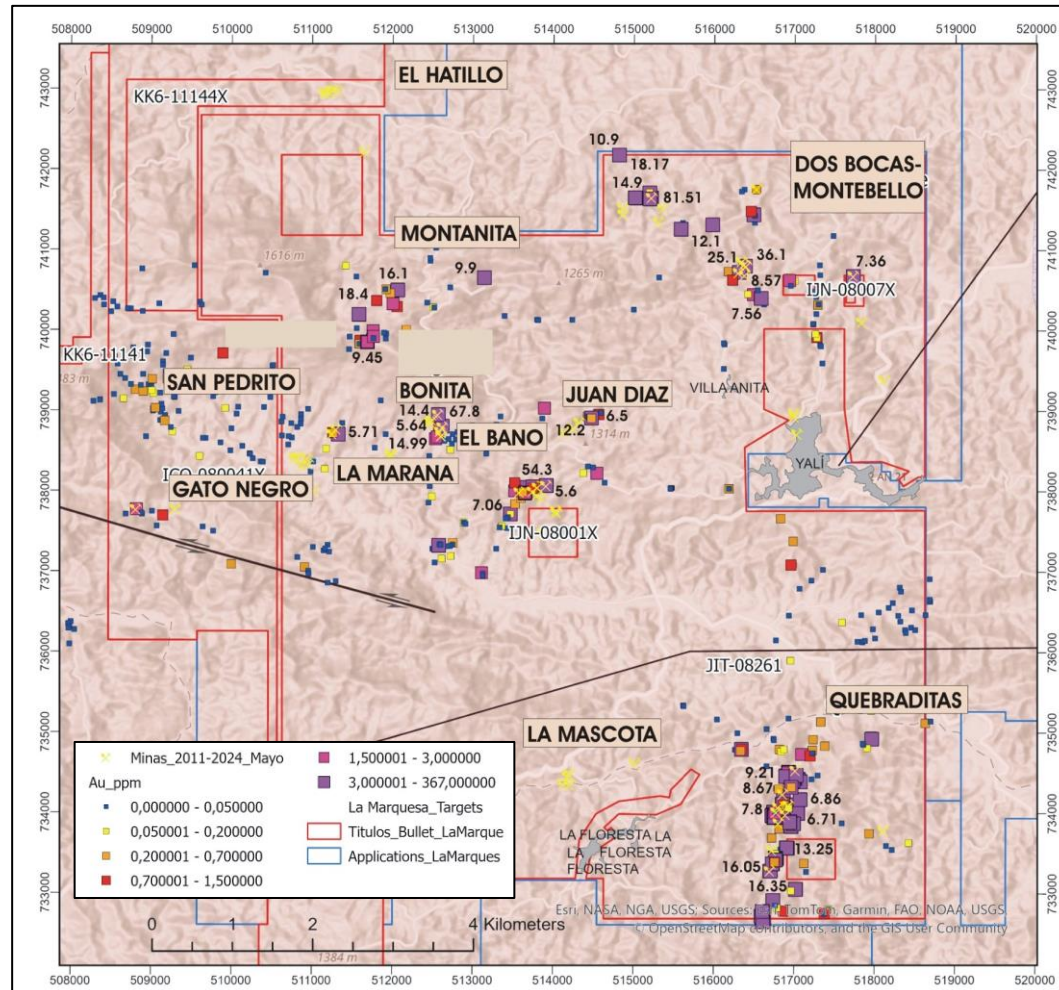
- The Marquesa gold camp hosts dozens of artisanal mines. It is located 10 km due north of B2Gold's Gramalote Project which hosts over 4 Moz Au of open-pit, bulk-mineable gold resources in various occurrences
- Marquesa has combined historic expenditures ~US\$3.3M includes widespread surface stream, soil and rock sampling, geological mapping, airborne geophysics, LIDAR and 1,475 m of diamond drilling (Trident Gold Ltd.).
- **Major Target Areas Include:**
 - **San Pedrito Target (3km x 1km):** Extensive hydraulic workings with coincident Au-Cu-Mo soil anomalies, potassic+phyllitic alteration and stockwork veining – Undrilled.
 - **La Maraña-El Baño-Juan Diaz Trend (4km x 1km):** Zones up to 50 m width with gold values of 0.25 – 0.7 g/t Au. Localised high-grade sections include 4.8m @ 4.85 g/t Au, Sheeted quartz veining with anomalous gold over 1.2km x 400m - Undrilled

La Marquesa District

Km-Scale Pluton-Related Bulk-Tonnage and High-Grade Au-Ag Targets



MONTEORO
MINERALS LTD



High-Grade Rock Sample Results in >60 Artisanal Mines

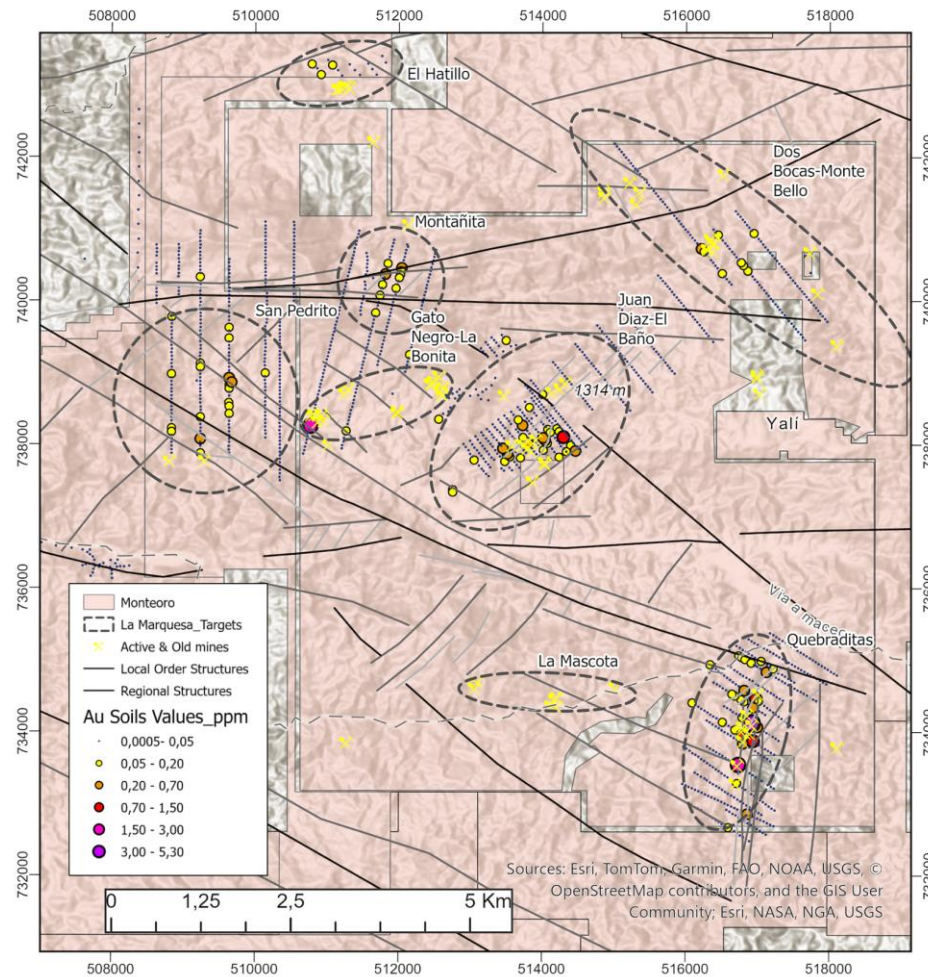
- **Major Target Areas Include:**
 - San Pedrito Target: 3km x 1km
 - La Maraña-El Baño-Juan Diaz Trend: 4km x 1km
 - Gato Negro Cluster: >1 Sq. km
 - Dos Bocas – Montebello Trend: +2km
 - La Montañita Trend: 2km x 1 km
 - La Mascota Trend: >1km
 - El Hatillo Occurrences: To be investigated
- *Selected High-Grade Values Shown at Left*

La Marquesa District



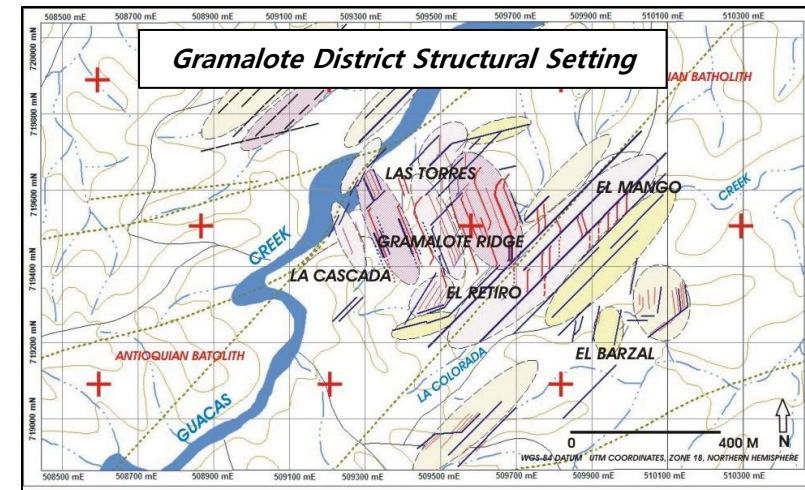
District Soil Geochem and Structure Support Pluton-Related Gramalote-Style Targets

MONTEORO
MINERALS LTD



Marquesa Similarities with Gramalote

- Geology, Hosted in Antioquia Batholith
- Structural Setting/Style
- Scale/Area
- Au-Ag Grades/ Endowment
- Au-Ag-Cu-Mo-W Geochemistry
- Age of Host Rocks



Source: Gramalote Property Report, B2Gold Corp., June 2008

Additional Projects

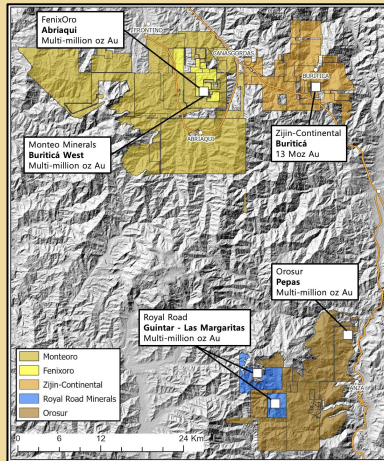
Long-term Pipeline Offering Opportunity for Au-Ag-Cu-Base-Metal Discoveries



MONTEORO
MINERALS LTD

Buritica West

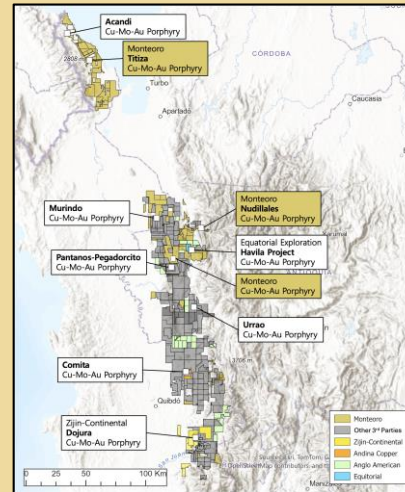
High-Grade Pluton-Related Au-Ag (Cu) and Epithermal Au, Porphyry Au-Cu Potential



- Strong continuity in numerous high-grade mesothermal veins, proven up to 2 km along strike and 350 m down dip
- 10 km west of Zijin Mining's +15 Moz AuEq Buritica Project
- Surrounds FenixOro's Abriaqui Project - 2.4 Moz Au estimated resource

Mande Trend

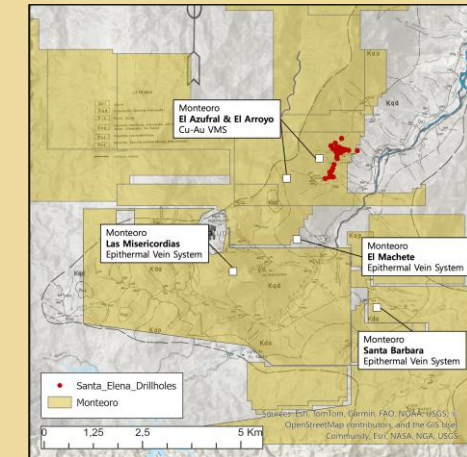
Mande Batholith Cu-Au Porphyry Trend



- World-Class Porphyry Potential
- Consists of 110,000 ha of mining titles and mining title applications capping the northern extension
- The Mande North (Unguia) project size and setting make it prospective for multiple Cu-Au porphyry discoveries

Santa Elena

High-Grade Massive Cu (Au, Ag, Zn) Massive Sulphide



- ~16,000 m drilled in 90 core holes, 2012-2014 by CuOro and Hudbay JV (2013-2014)
- Two drilled targets outcrop: El Azufral and El Arroyo
- Top intercepts from historical drilling include: 46 m at 1.82% Cu, 40 m at 2.28% Cu, and 102 m at 1.56% Cu

See Appendix for additional project information

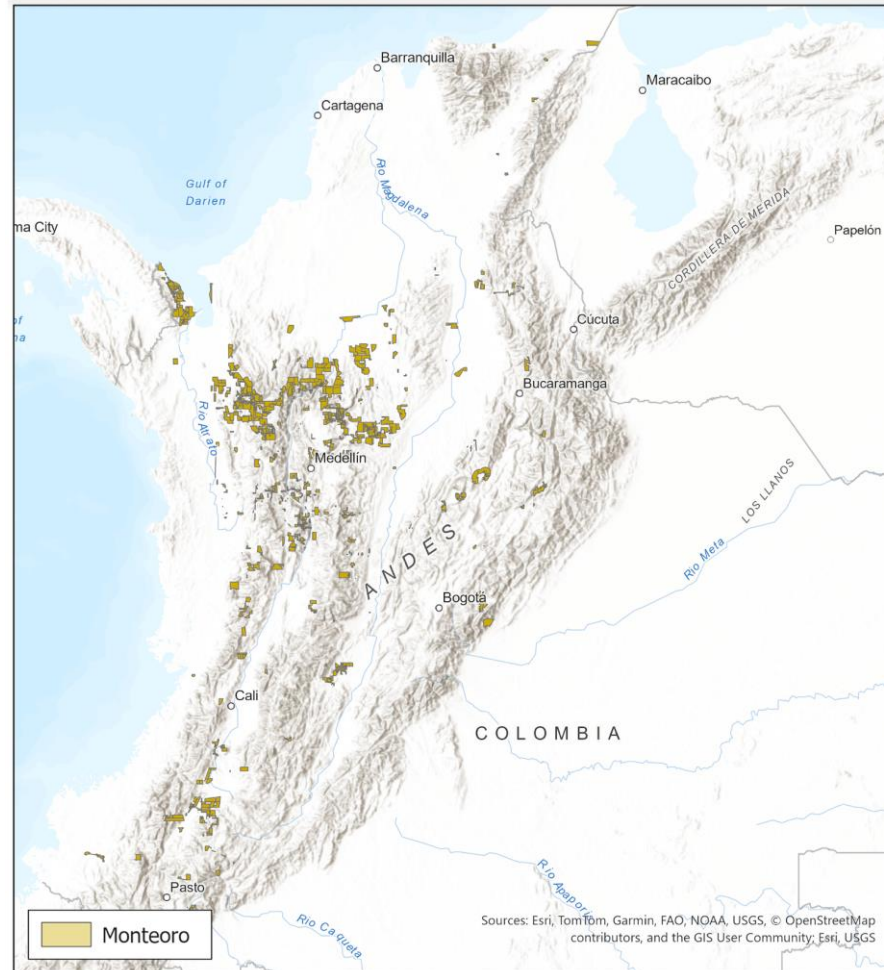
Over 1M Additional Hectares

Over 1M Additional Hectares in Valid Exploration Applications



MONTEORO
MINERALS LTD

- Monteoro's technical and legal teams have an excellent relationship with the **Colombian Agencia Nacional Minera (ANM)**, the entity responsible for converting Mineral Applications to Exploration Titles
- Monteoro is evaluating and converting Mineral Applications to Exploration Titles, based upon perceived metallogenetic potential, available data and our unparalleled in-house field experience in Colombia
- The Colombian Mining Code permits "non-invasive" prospecting, mapping and surface sampling on Mineral Applications, allowing Monteoro to carry out surface evaluations prior converting Mineral Applications to Exploration Titles



Monteoro's mineral tenure provides a long-term Project Pipeline offering abundant opportunity for Au-Ag-Cu-Base-Metal Discoveries

Monteoro's mineral tenure is dispersed throughout the proven and productive Colombian gold metallogenetic belts. The placement of of tenure was managed by the same team which managed AngloGold Ashanti's target generation and staking program, 2002-2010, headed by Chief Geologist, Robert Shaw



MONTEORO
MINERALS LTD

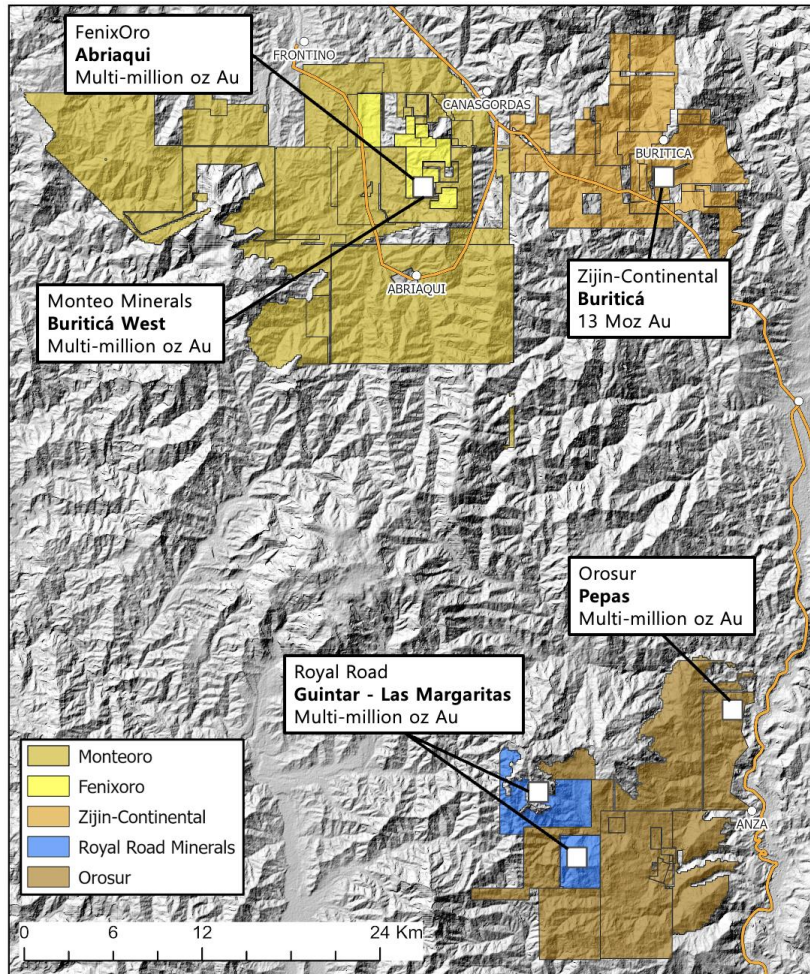
Appendix | Additional Projects

Buritica West Project



High-Grade Pluton-Related Au-Ag (Cu) and Epithermal Au, Porphyry Au-Cu Potential

MONTEORO
MINERALS LTD



High-Grade Au-Ag (Cu) in Dozens of Veins / Contacts

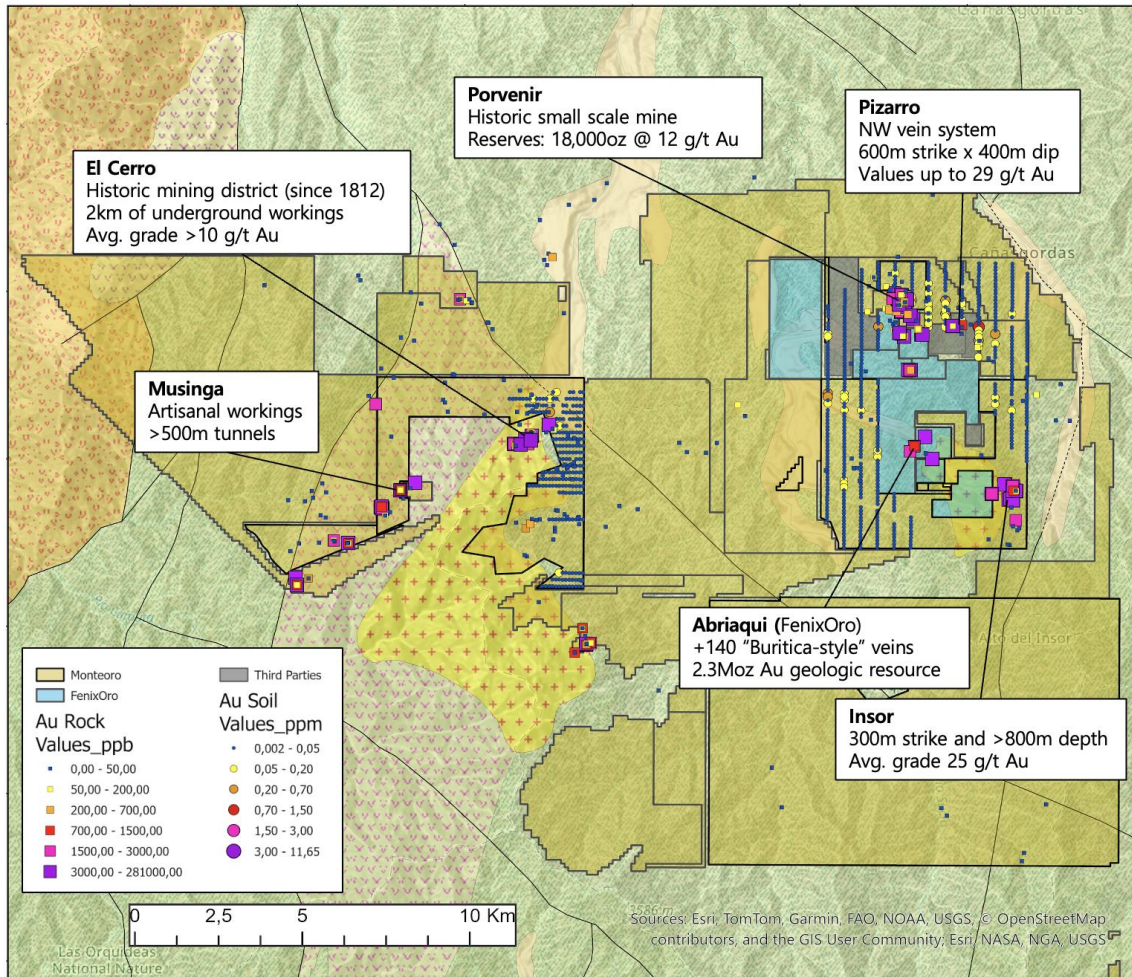
- Dominant land position in two historic adjacent gold camps: Old Frontino and Abriaqui (Buritica West)
- Located immediately west of the 13 Moz Au Buritica camp (Zijin Mining)
- El Cerro-San Diego mine in Frontino camp has produced >1 Moz Au
- Monteoro controls over 58,000 ha of mineral tenure between/within the two historic districts – Buritica and El Cerro
- Strong continuity in numerous high-grade mesothermal veins, proven up to 2km along strike and 350m down dip
- Numerous high-grade pluton-related veins
- Expenditures to date ~USD\$200,000 (under-explored)
- Dozens of mineralized occurrences in prolific E-W artisanal mining corridor between Buritica (13 Moz AuEq) and El Cerro (historic production > 1 Moz AuEq)

Buritica West Project



High-Grade Pluton-Related Au-Ag (Cu) and Epithermal Au, Porphyry Au-Cu Potential

MONTEORO
MINERALS LTD



- Available Monteoro data includes soil geochemistry, rock chip sampling, stream sediment geochemistry and regional airborne magnetics
- Strong coincidence between calc-alkaline diorites, gold mineralization and magnetic highs in regional magnetics
- Additionally, ore mineralogy includes pyrrhotite, enhancing magnetic signature
- Monteoro Ag soil geochem reflects numerous anomalies within Monteoro tenure but outside of active and historic artisanal workings
- Additional pathfinder elements include Cu, Bi, Te and Mo

Mande Batholith Cu-Au Porphyry Trend

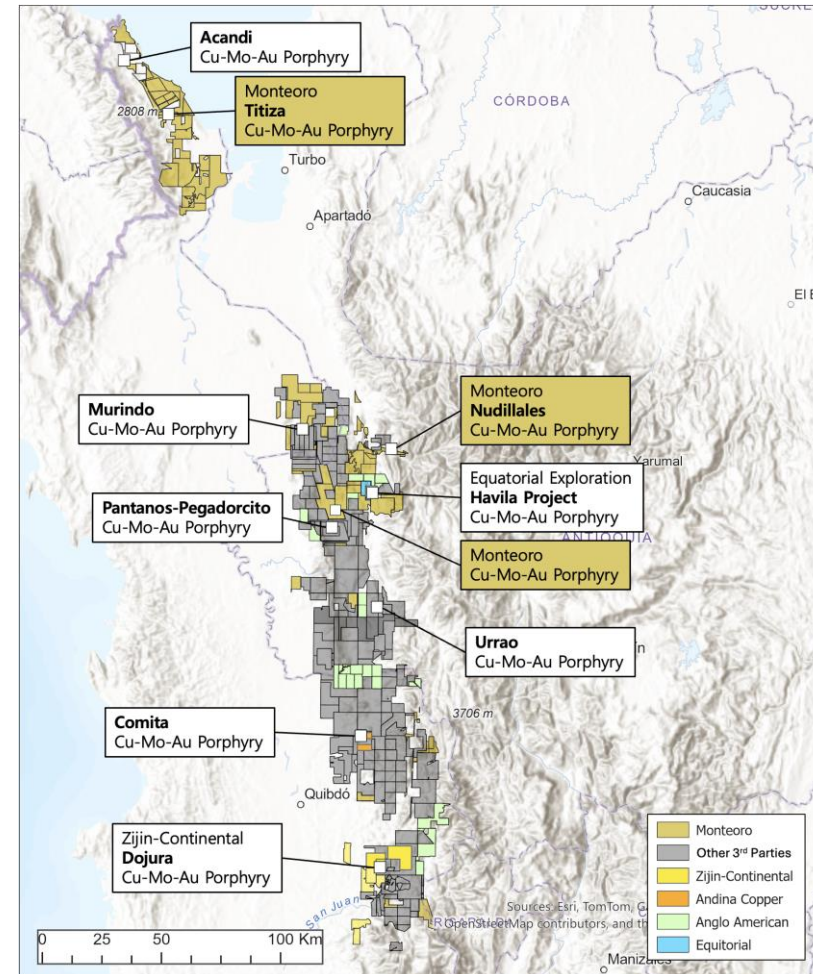
Situated Among Major Copper Discoveries



MONTEORO
MINERALS LTD

Mande Batholith Porphyry Trend

- World-Class Porphyry Potential
- Monteoro controls potential along-strike extensions and new discoveries to N and S
- Mineral Belt extends along Mande Batholith trend through the N and into the S



Mande North (Unguia) Project

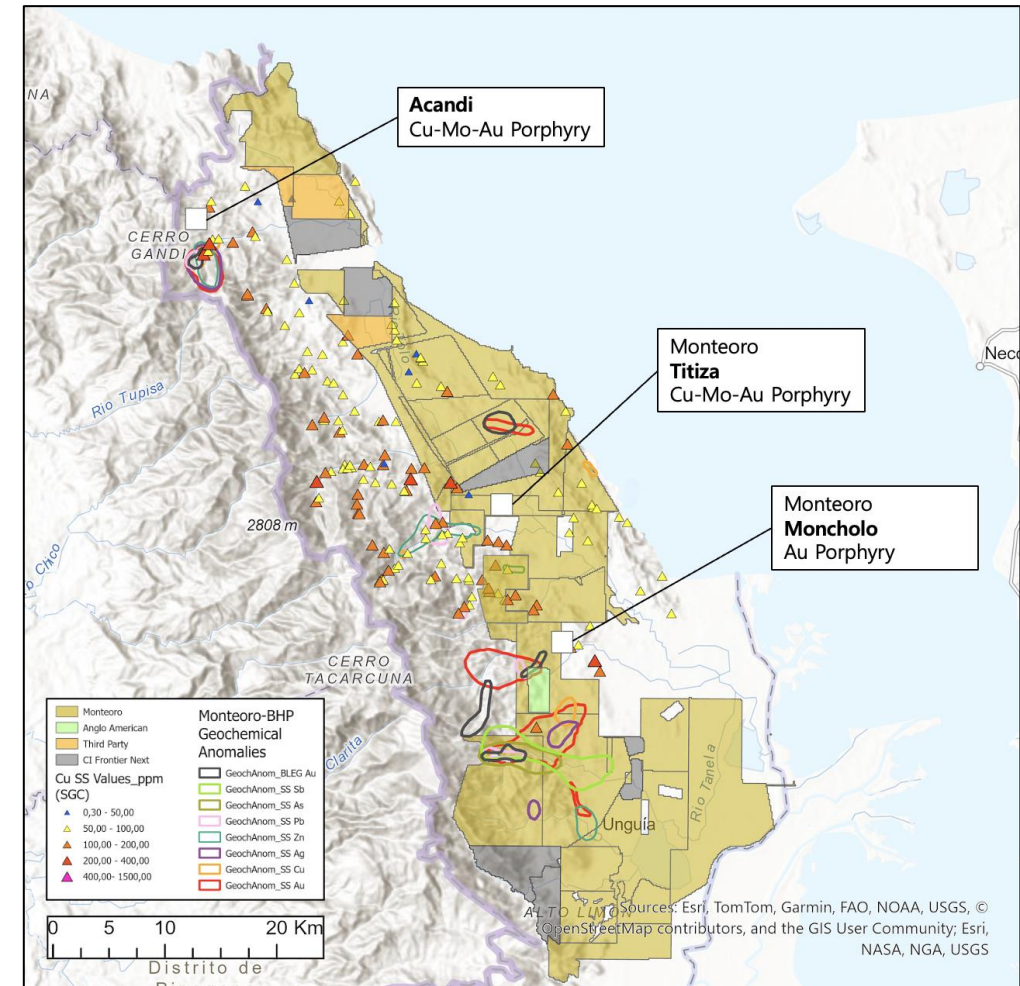
Cu-Au Porphyry and Epithermal Au (Ag) Project



MONTEORO
MINERALS LTD

Cu-Au Porphyry and Epithermal Au-Ag Potential

- Consists of 110,000 ha of mining titles and mining title applications capping the northernmost extension of Mande Trend
 - The largely unexplored Mande trend is home to world-class Cu/Mo deposits
- The Mande North (Unguia) project size and setting make it prospective for multiple Cu-Au porphyry discoveries
 - The project is located at the northern end of the Mande Trend. The basement is dominated by thick sequences of early Cretaceous flyschoid volcanic and sedimentary strata, intruded by Paleocene and Eocene plutonic and hypabyssal intrusive rocks
- Cu-Au porphyry potential is associated with hypabyssal rocks. Epithermal gold mineralization has been documented

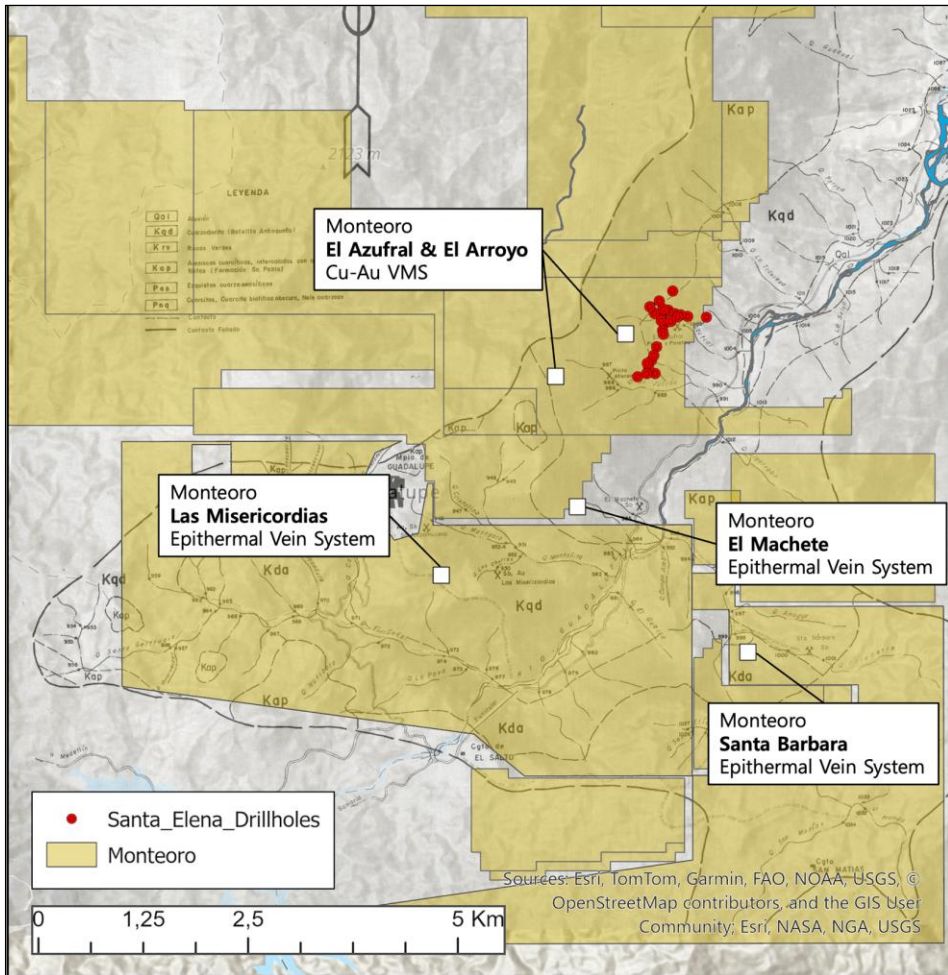


Santa Elena Project

High-Grade Cu (Au, Ag, Zn) Massive Sulphide



MONTEORO
MINERALS LTD



Outcropping Multi-Million Tonne, High-Grade Cu Potential

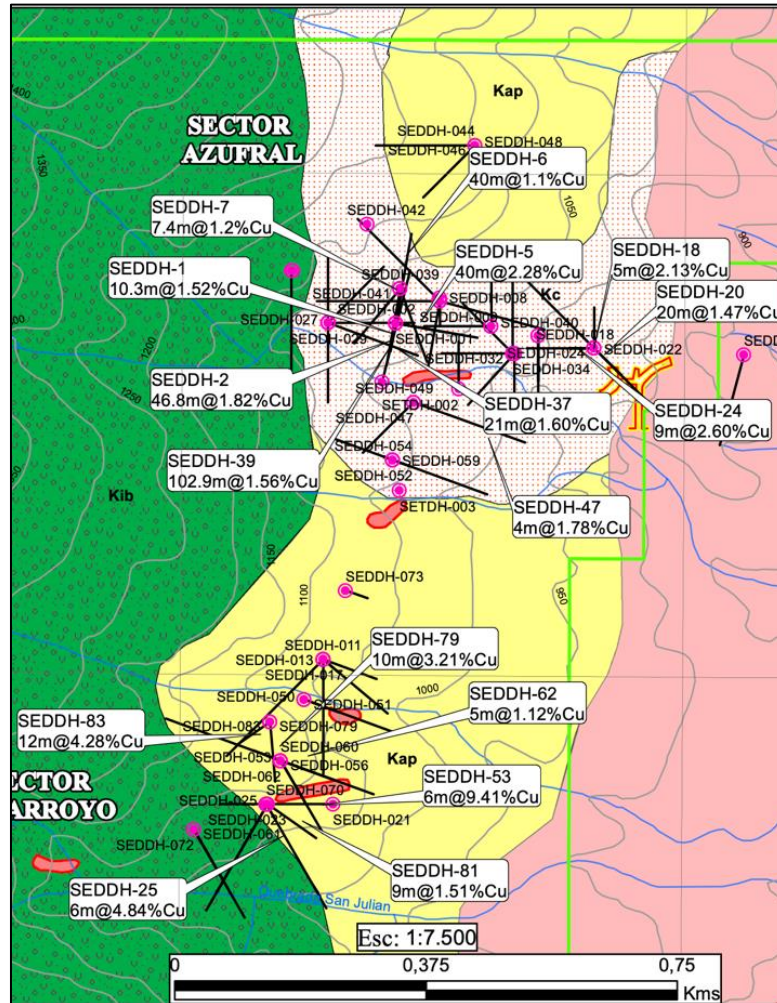
- At least two high-grade Cu-rich massive sulphide occurrences hosted within the early Cretaceous San Pablo volcano-sedimentary sequence
- ~2,000 ha in Mineral Exploration Applications. A 569 ha Application covers all historic drilling
- **~16,000 m drilled in 90 core holes, 2012-2014 by CuOro and HudBay JV (2013-2014)**
- Combined historic expenditures estimated at US\$8M
- Peak CuOro Resources market capitalization in 2011 of ~C\$60M
- Two drilled targets outcrop: El Azufra and El Arroyo
- Additional outcropping targets un-drill tested

Santa Elena Project

High-Grade Cu (Au, Ag, Zn) Massive Sulphide



MONTEORO
MINERALS LTD



Outcropping Multi-Million Tonne, High-Grade Cu Potential

- Aptian-Albian San Pablo volcano-sedimentary sequence: A rift-related, bimodal volcanic – siliciclastic package
- Intruded by ca. 80Ma phase of Antioquian Batholith
- Interpreted as Besshi-type of VHMS system (at present)
- Known, drilled targets appear open to the NW-SE
- Additional outcropping targets un-drill tested

Selected Historic Santa Elena Drill Results

El Azufral

SEDDH-2: 46m @ 1.82% Cu
SEDDH-5: 40m @ 2.28% Cu
SEDDH-20: 20m @ 1.47% Cu
SEDDH-37: 21m @ 1.37% Cu
SEDDH-39: 102m @ 1.56 % Cu

El Arroyo

SEDDH-25: 6m @ 4.84% Cu
SEDDH-53: 6m @ 9.41% Cu
SEDDH-79: 10m @ 3.21% Cu
SEDDH-81: 9m @ 1.51% Cu
SEDDH-83: 12m @ 4.28% Cu

Santa Elena Project

High-Grade Cu (Au, Ag, Zn) Massive Sulphide

EL AZUFRAL: High-Grade Massive Sulphide Cu

Excellent drill results – poorly understood “ore” geometry

- SEDDH-2: 46m @ 1.82% Cu
- SEDDH-5: 40m @ 2.28% Cu
- SEDDH-39: 102m @ 1.56% Cu
- Massive Chalcopyrite Mineralization outcrops at surface (12 metre thickness @ > 2% Cu)
- Mineralization appears open down-dip to southwest
- +5M metric tonne potential, open pit-block cave @ >1.5% Cu
- Excellent Infrastructure, power, road access

